

The North Shore Labor Market

The following provides current labor market information on the North Shore labor market for the North Shore Workforce Investment Board (NSWIB).

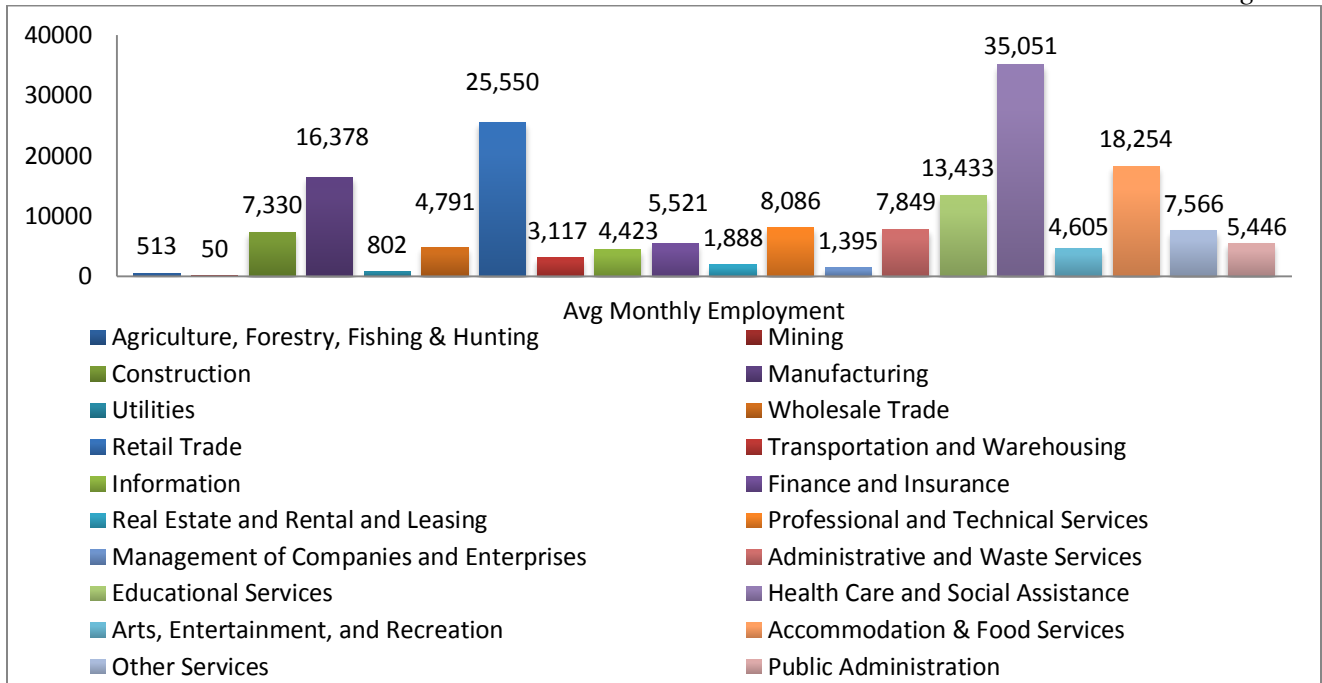
North Shore Employment & Wage Information

The information in this section provides employment and wage information on the North Shore industrial sectors. The information used comes from the Massachusetts Executive Office of Labor and Workforce Development’s employment & wage survey program (ES-202). The most recent data available is for the 3rd Quarter 2013.

Average Monthly Employment on the North Shore¹

In the 3rd Quarter 2013, the average monthly employment on the North Shore was 172,046. The North Shore accounts for 5.2% of the 3,304,250 individuals employed in Massachusetts. The three largest industrial sectors on the North Shore are Health Care & Social Assistance (35,051 employed), Retail Trade (25,550 employed), and Accommodation & Food Services (18,254 employed). The three smallest industrial sectors on the North Shore are Mining (50 employed), Agriculture, Forestry, Fishing, & Hunting (513 employed), and Utilities (802 employed).

Figure 1

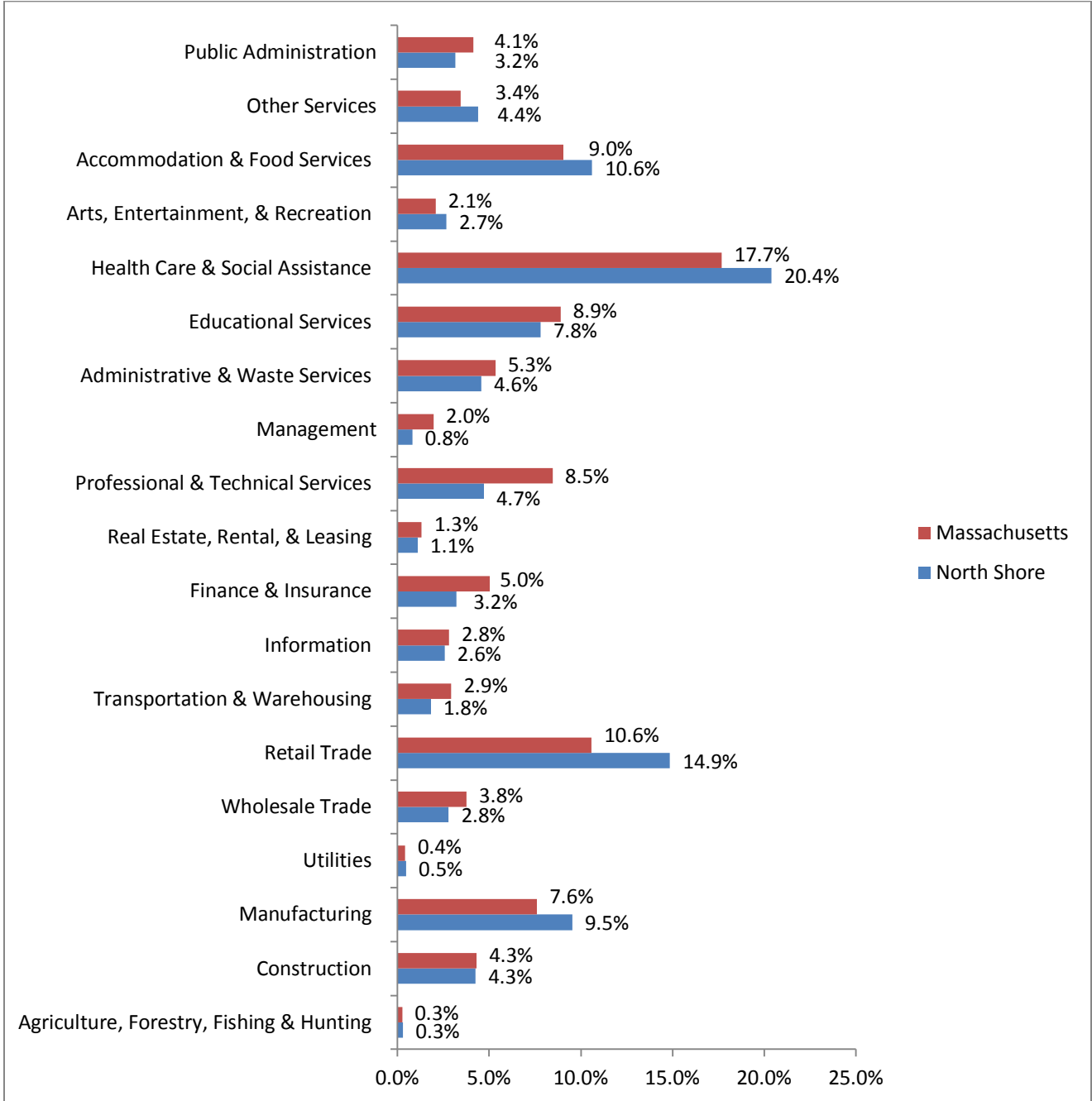


¹ Massachusetts Executive Office of Labor and Workforce Development, ES-202 Survey program, 3rd Quarter 2013, www.mass.gov/lmi

North Shore Employment Breakdown by Industry²

Figure 2 compares the North Shore to Massachusetts in terms of employment percentage by industrial sector. The North Shore industrial sectors that have a higher employment percentage than Massachusetts are Manufacturing, Utilities, Retail Trade, Health Care & Social Assistance, Arts, Entertainment, & Recreation, Accommodation & Food Services, and Other Services.

Figure 2



² Massachusetts Executive Office of Labor and Workforce Development, ES-202 Survey program, 3rd Quarter 2013, www.mass.gov/lmi

Employment Growth 3rd Quarter 2012 to 3rd Quarter 2013³⁻⁴

Figure 3 shows employment growth from the 3rd Quarter 2012 to the 3rd Quarter 2013 for the North Shore, and Figure 4 shows employment growth over the same period for Massachusetts. Employment on the North Shore increased .6% adding 955 jobs, while Massachusetts increased employment by 1.5% adding 47,884 jobs. The three industrial sectors on the North Shore with the highest percent growth are Utilities (11.9% increase), Construction (8.7% increase), and Health Care & Social Assistance (8.2% increase). The three industries on the North Shore that had the largest percent decrease are Management (21.1% decrease), Other Services (9.7% decrease), and Wholesale Trade (7.4% decrease).

Figure 3

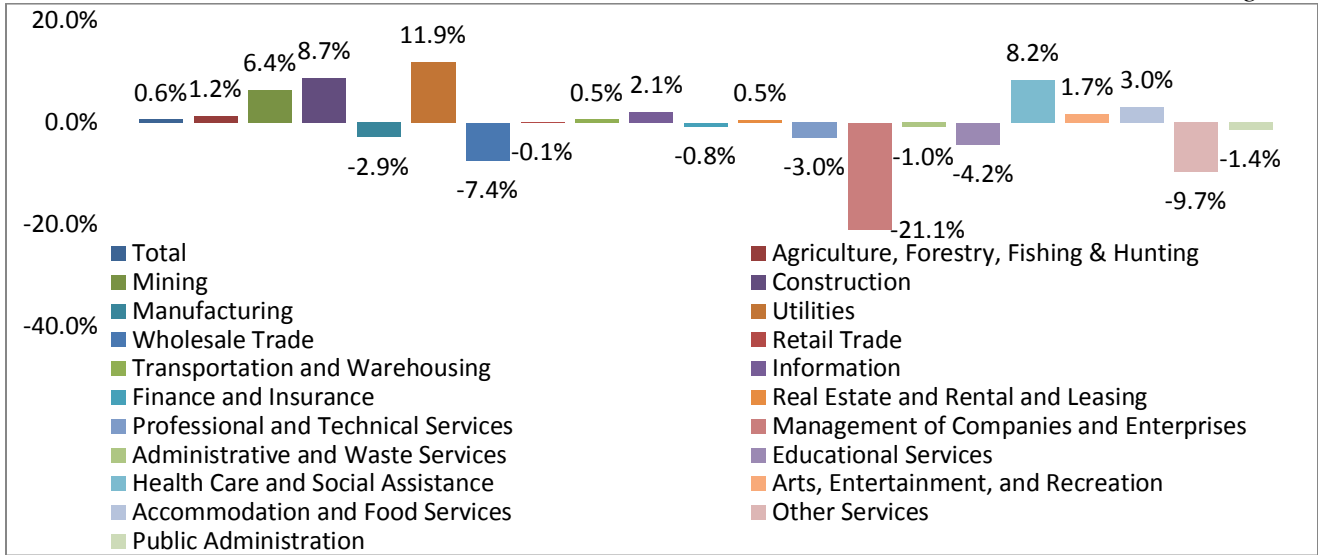
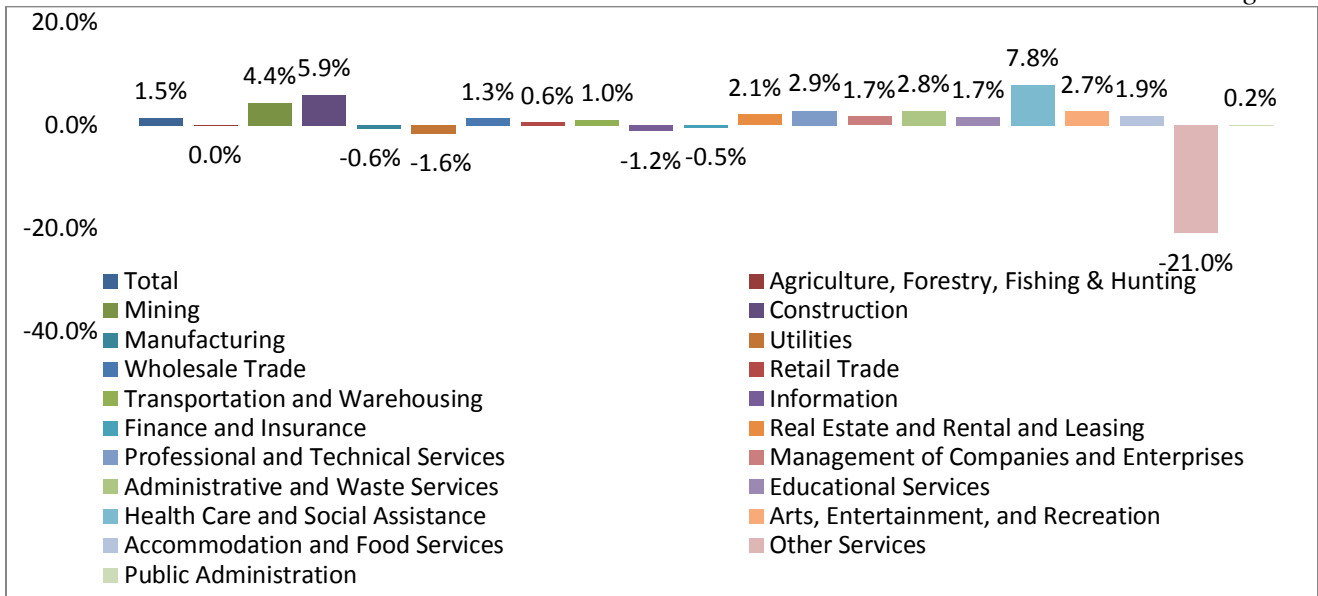


Figure 4



³ Massachusetts Executive Office of Labor and Workforce Development, ES-202 Survey program, 3rd Quarter 2013, www.mass.gov/lmi

⁴ Massachusetts Executive Office of Labor and Workforce Development, ES-202 Survey program, 3rd Quarter 2012, www.mass.gov/lmi

Employment Growth 3rd Quarter 2009 to 3rd Quarter 2013⁵⁻⁶

Figure 5 shows employment growth from the 3rd quarter 2009 to the 3rd quarter 2013 for the North Shore and Figure 6 shows employment growth over the same time period for Massachusetts. Employment on the North Shore increased 6.5% adding 10,459 jobs, while Massachusetts employment increased 5.8% adding 181,734 jobs. The three industrial sectors on the North Shore with the highest percent growth are Information (36.8% increase), Health Care & Social Assistance (17.3% increase), and Administrative & Waste Services (17.1% increase). The three industries on the North Shore that had the largest percent decrease are Wholesale Trade (19.5% decrease), Management (15.6% decrease), and Public Administration (5.1% decrease).

Figure 5

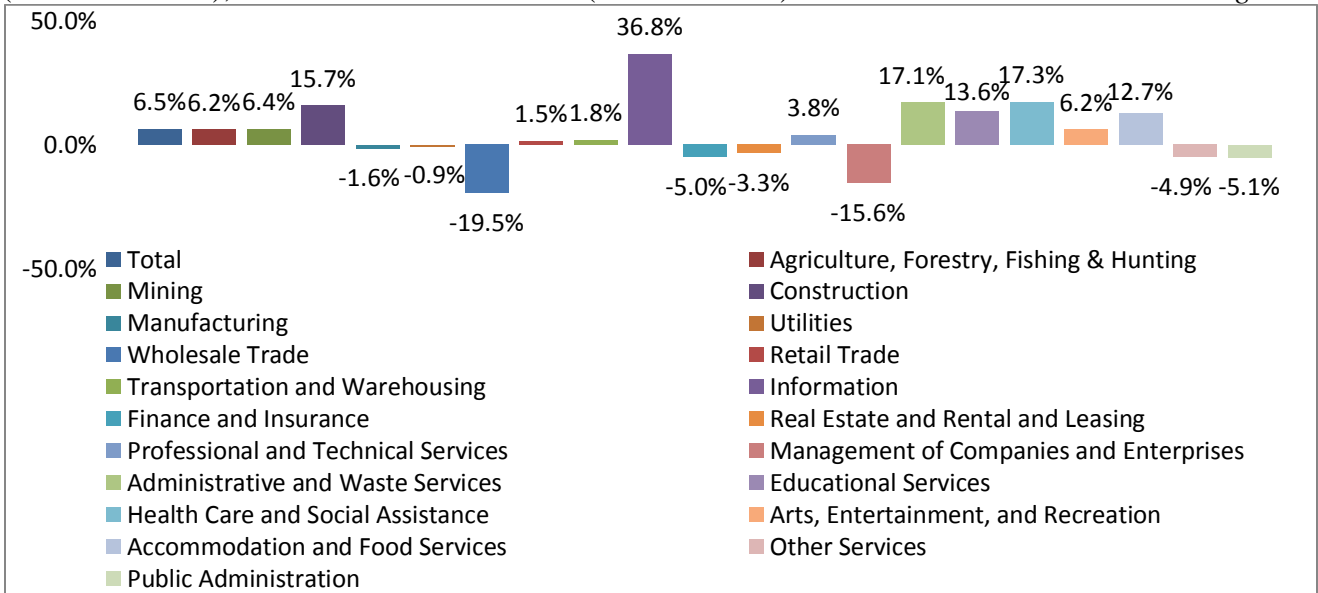
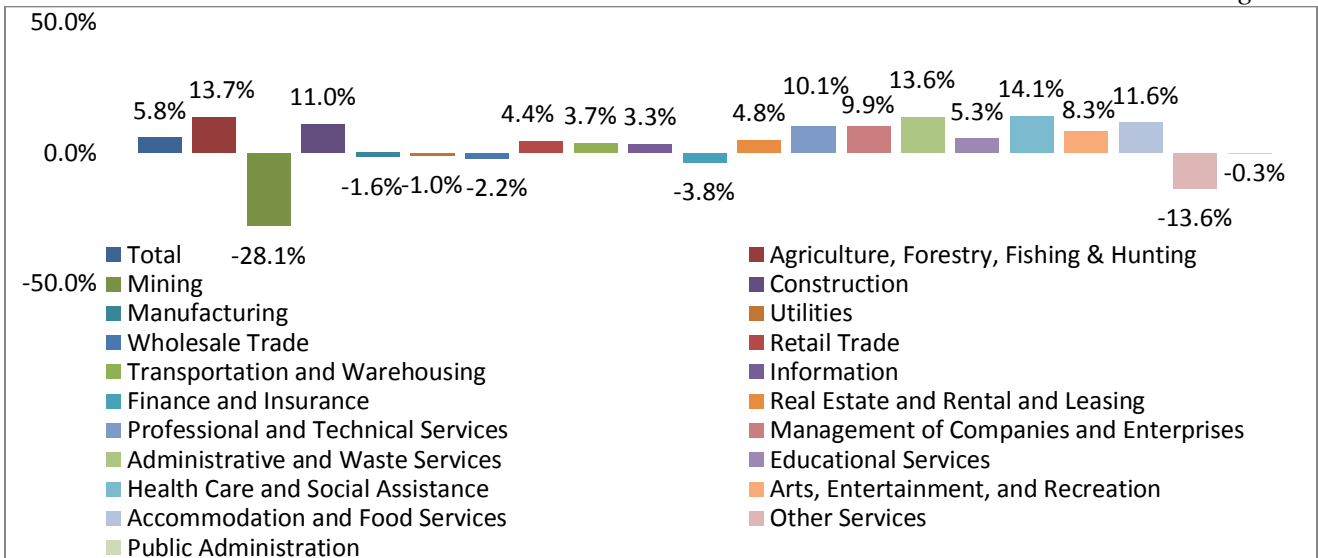


Figure 6



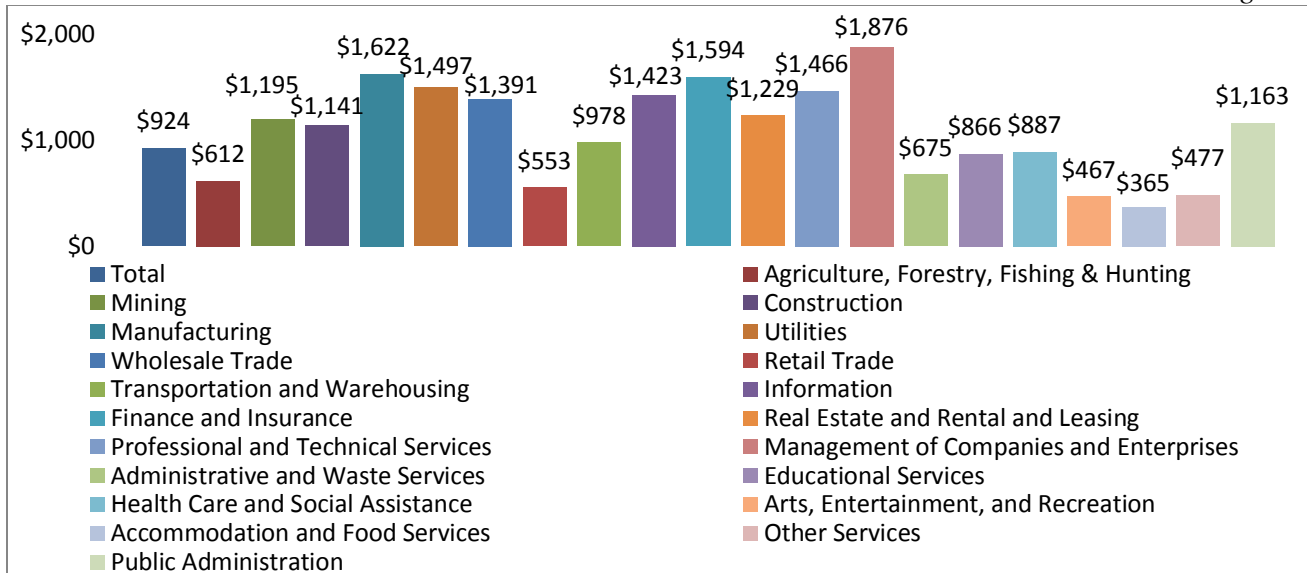
⁵ Massachusetts Executive Office of Labor and Workforce Development, ES-202 Survey program, 3rd Quarter 2013, www.mass.gov/lmi

⁶ Massachusetts Executive Office of Labor and Workforce Development, ES-202 Survey program, 3rd Quarter 2009, www.mass.gov/lmi

North Shore Average Weekly Wage by Industrial Sector⁷

Figure 7 shows the average weekly wages on the North Shore by Industrial Sector. The average weekly wage on the North Shore is \$924; this is \$207 or 18% less than the Massachusetts average weekly wage of \$1,131. The three top paying industrial sectors on the North Shore are Management (\$1,876), Manufacturing (\$1,622), and Finance & Insurance (\$1,594). The three industrial sectors on the North Shore with the lowest average weekly wage are Accommodation & Food Services (\$365), Arts, Entertainment, & Recreation (\$467), and Other Services (\$477).

Figure 7



North Shore Establishment Information

This section provides information on North Shore establishments. The information used comes from the Massachusetts Executive Office of Labor and Workforce Development’s employment & wage survey program (ES-202) for the 3rd quarter 2013.

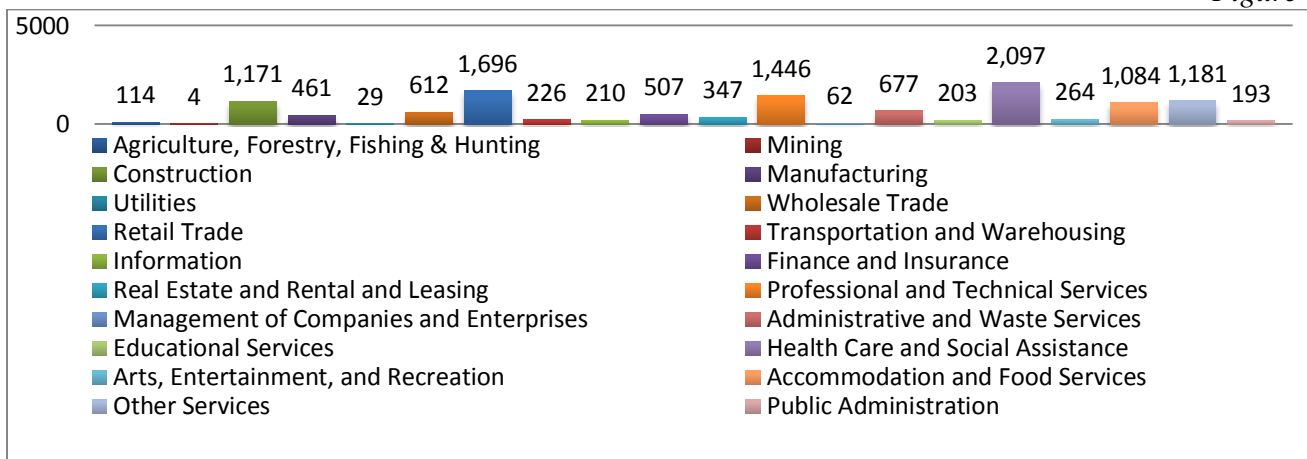
North Shore Establishments by Industrial Sector⁸

In the 3rd Quarter of 2013, there were 12,584 establishments on the North Shore. Figure 8 shows North Shore establishments by Industrial Sector. The North Shore accounted for 5.5% of the 228,838 establishments in Massachusetts. The three industrial sectors with the largest number of establishments are Health Care and Social Assistance (2,097 establishments), Retail Trade (1,696 establishments), and Professional & Technical Services (1,446 establishments). The three largest industrial sectors account for nearly 42% of all establishments on the North Shore. The three industrial sectors with the smallest number of establishments on the North Shore are Mining (4 establishments), Utilities (29 establishments), and Management (62 establishments). The three smallest industrial sectors account for .8% of all establishments on the North Shore.

⁷ Massachusetts Executive Office of Labor and Workforce Development, ES-202 Survey program, 3rd Quarter 2013, www.mass.gov/lmi

⁸ Massachusetts Executive Office of Labor and Workforce Development, ES-202 Survey program, 3rd Quarter 2013, www.mass.gov/lmi

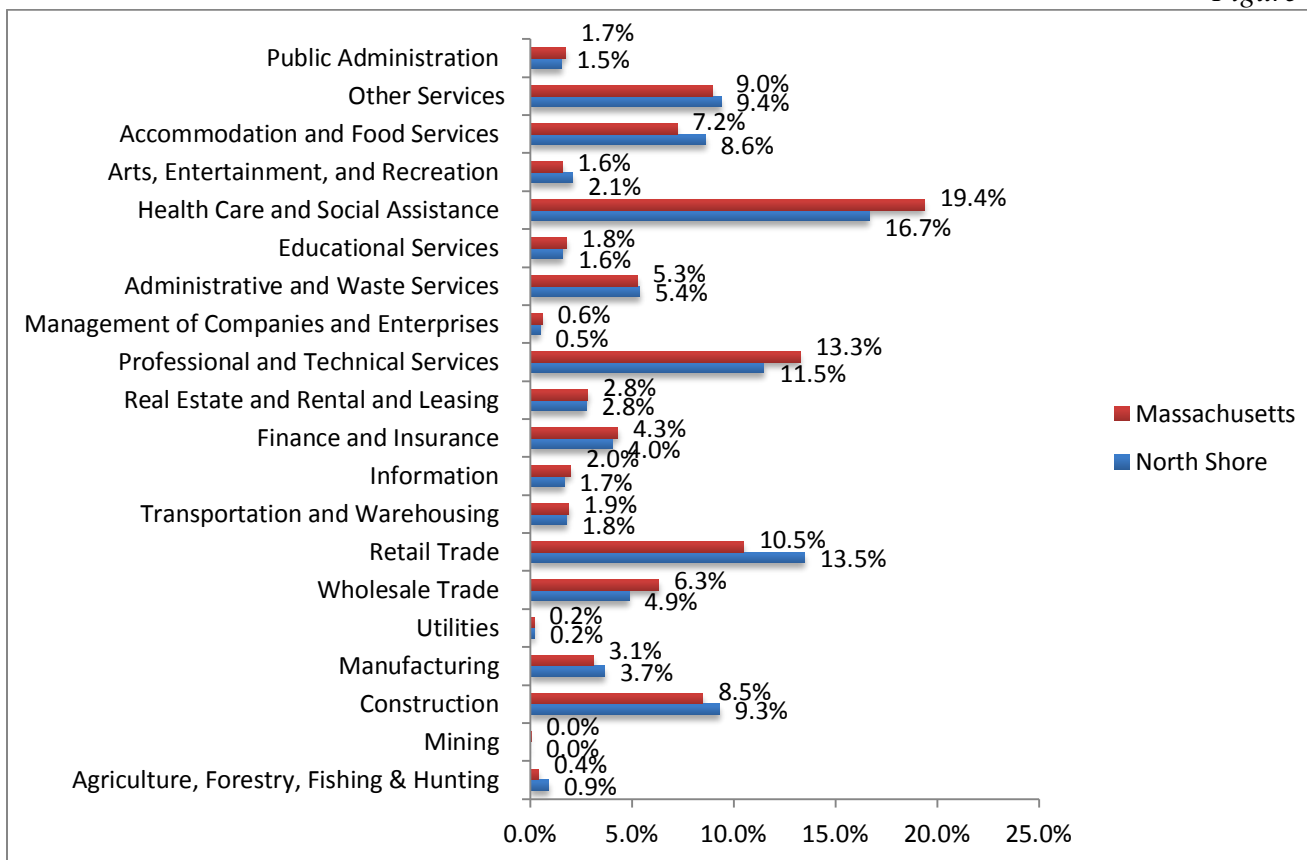
Figure 8



North Shore Establishment Percentage Breakdown by Industry²

Figure 9 compares the North Shore to Massachusetts in terms of establishment percentage by industrial sector. The North Shore industrial sectors that had a higher establishment percentage than Massachusetts are Other Services, Accommodation & Food Services, Arts, Entertainment, & Recreation, Administrative & Waste Services, Retail Trade, Manufacturing, Construction, and Agriculture, Forestry, Fishing, & Hunting.

Figure 9



⁹ Massachusetts Executive Office of Labor and Workforce Development, ES-202 Survey program, 3rd Quarter 2013, www.mass.gov/lmi

Establishment Growth 3rd Quarter 2012 to 3rd Quarter 2013¹⁰

Figure 10 shows establishment growth from the 3rd quarter 2012 to the 3rd quarter 2013 for the North Shore and Figure 11 shows establishment growth over the same period for Massachusetts. Establishments on the North Shore increased 2.4% adding 299 establishments, while Massachusetts establishments increased 3.3% adding 7,304 establishments. There are no industrial sectors that had negative establishment growth in both the North Shore and in Massachusetts, and the only industrial sectors to have negative growth in the North Shore were Wholesale Trade (5.6% decrease) and Finance & Insurance (1.6% decrease).

Figure 10

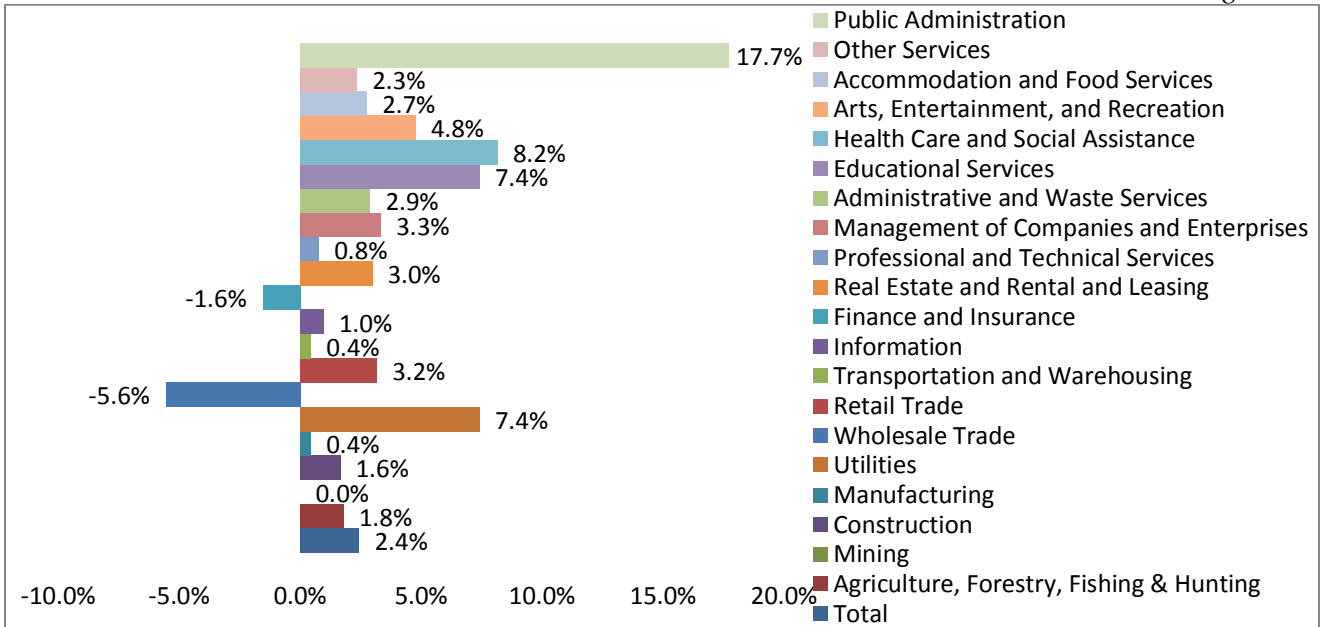
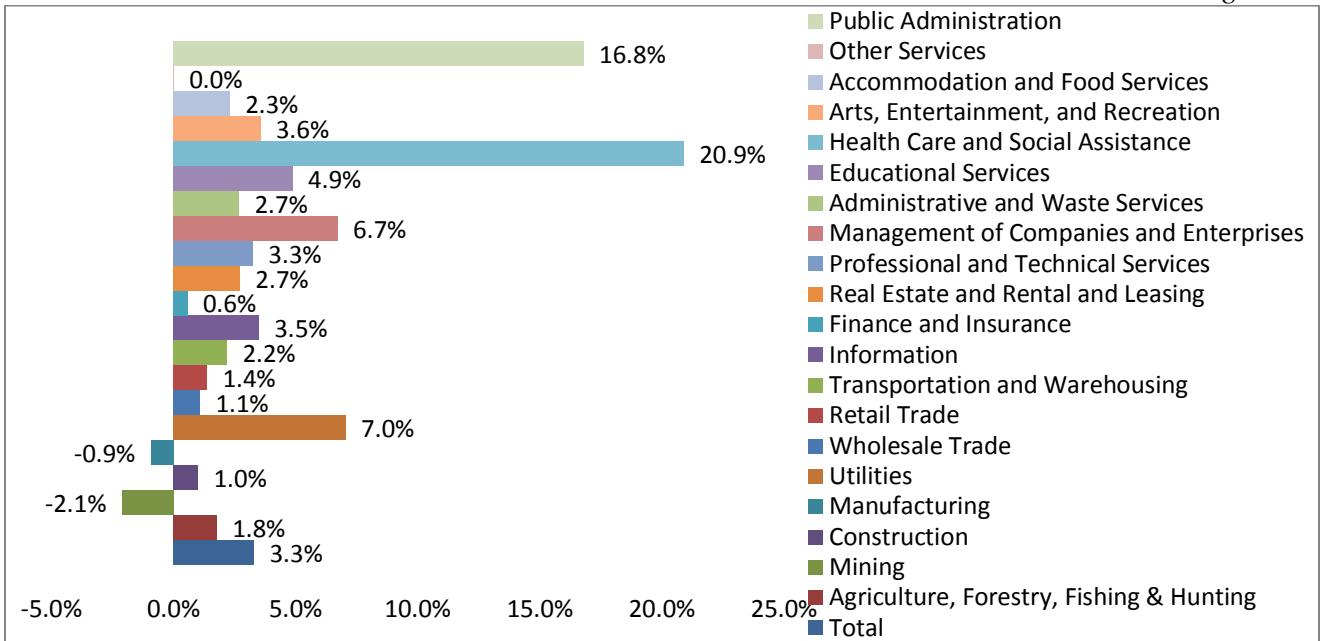


Figure 11



¹⁰ Massachusetts Executive Office of Labor and Workforce Development, ES-202 Survey program, 3rd Quarter 2013, www.mass.gov/lmi

Establishment Growth 3rd Quarter 2009 to 3rd Quarter 2013¹¹⁻¹²

Figure 12 shows establishment growth from the 3rd quarter 2012 to the 3rd quarter 2013 for the North Shore and Figure 13 shows establishment growth over the same period for Massachusetts. Establishments on the North Shore increased 6% adding 716 establishments, while Massachusetts establishments increased 7.5% adding 15,922 establishments. The three industrial sectors on the North Shore with the highest percent growth in establishments are Utilities (31.8% increase), Health Care & Social Assistance (15.9% increase) and Public Administration (15.6% increase). The three industries on the North Shore that had the largest percent decrease are Management (8.8% decrease), Wholesale Trade (8.4% decrease), and Manufacturing (4.9% decrease).

Figure 12

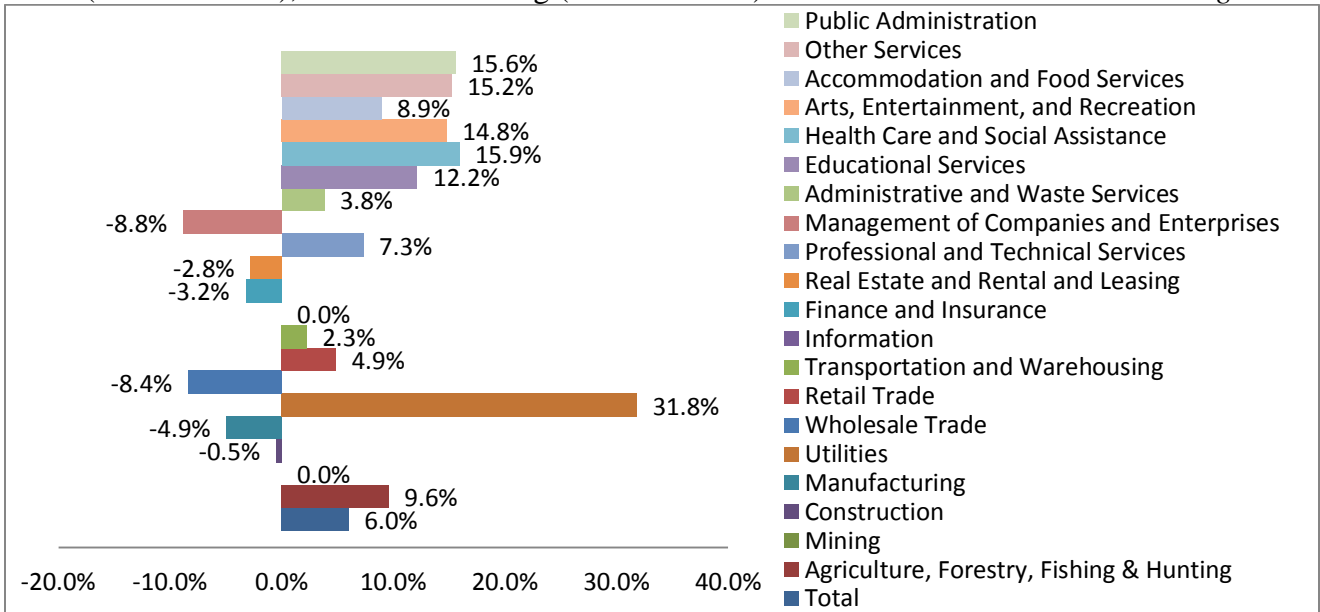
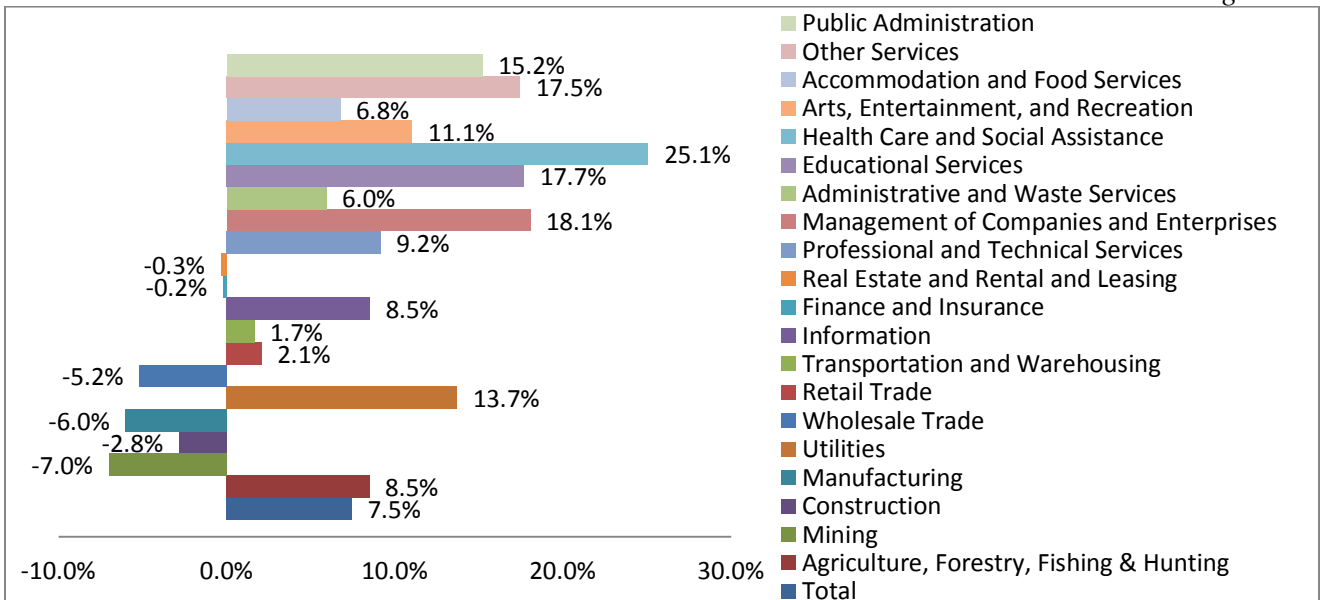


Figure 13



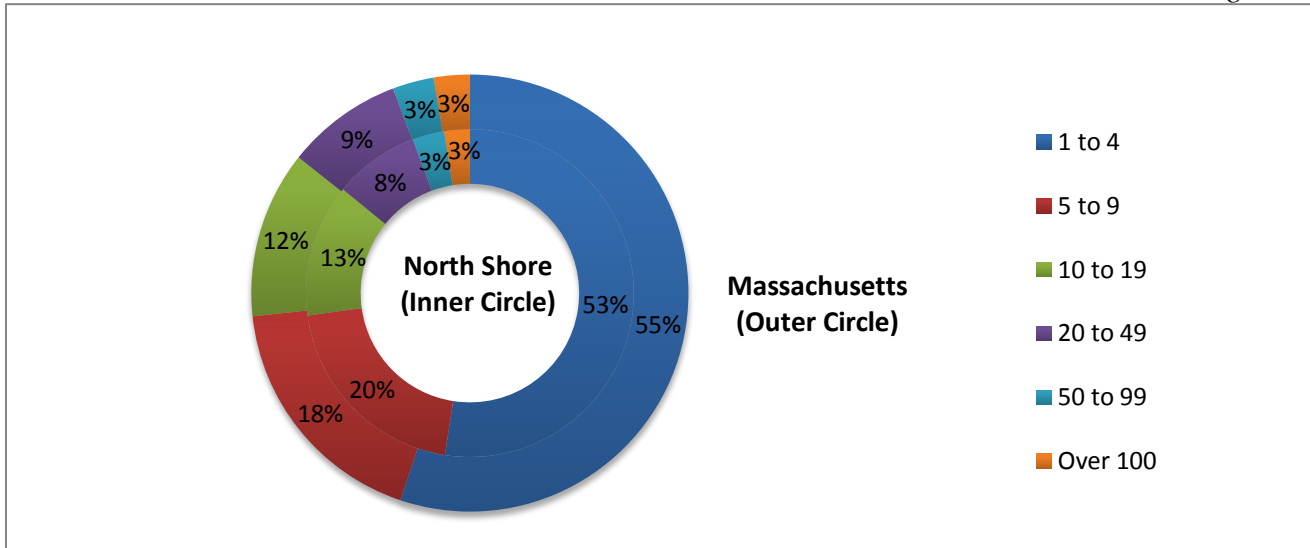
¹¹ Massachusetts Executive Office of Labor and Workforce Development, ES-202 Survey program, 3rd Quarter 2009, www.mass.gov/lmi

¹² Massachusetts Executive Office of Labor and Workforce Development, ES-202 Survey program, 3rd Quarter 2013, www.mass.gov/lmi

Establishments by Employment Size¹³

Figure 14 compares the North Shore and Massachusetts establishments by the number of workers employed. The inner circle represents the North Shore and the outer circle represents Massachusetts. Both the North Shore and Massachusetts are dominated by establishments with 9 or less employees. On the North Shore, 73% of all establishments had 9 or less employees, which is the same percentage as Massachusetts.

Figure 14



North Shore Labor Force, Unemployment, Job Vacancy, and Population

This section provides information on North Shore establishments. The information used comes from the Massachusetts Executive Office of Labor and Workforce Development’s Local Area Unemployment Statistics (LAUS). The most recent data available is for March 2014. Additional information comes from the Massachusetts Executive Office of Labor and Workforce Development’s Job Vacancy Survey for the 3rd Quarter 2013 and the United States Census Bureau.

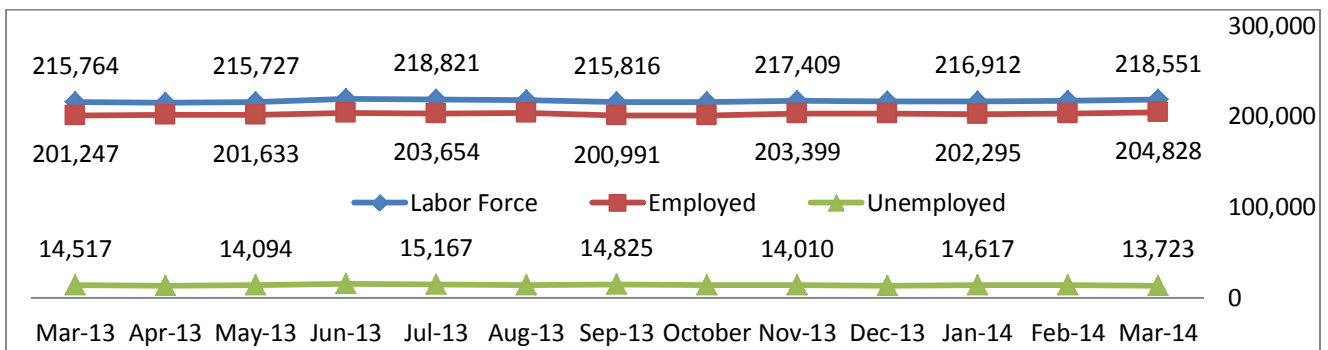
North Shore Labor Force, Employed, and Unemployed¹⁴

Figure 15 shows the total number of workers in the labor force, those that are employed, and those who are unemployed for the last thirteen months on the North Shore. From March 2013 to March 2014, the North Shore labor force has increased from 215,764 to 218,551 representing a growth of 1.3%. In the same timeframe, North Shore employment has increased from 201,247 to 204,828 representing a growth of 1.8% and North Shore unemployment decreased from 14,517 to 13,723 representing a decrease of 5.5%.

Figure 15

¹³ Massachusetts Executive Office of Labor and Workforce Development, ES-202 Survey program, 3rd Quarter 2013, www.mass.gov/lmi

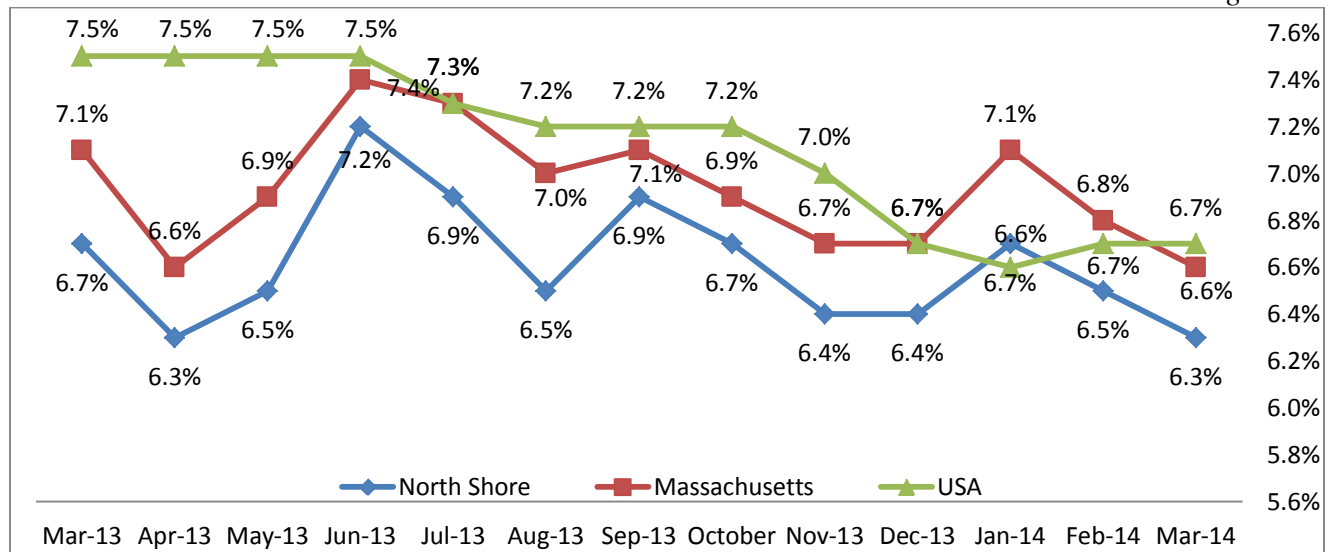
¹⁴ Massachusetts Executive Office of Labor and Workforce Development, Job Vacancy Survey, 3rd Quarter 2013, www.mass.gov/lmi



North Shore Unemployment Rate¹⁵

In March 2014, the North Shore unemployment rate was 6.3%, which was .4% lower than the national rate of 6.7% and 0.3% lower than the Massachusetts rate of 6.6%. Figure 16 shows the unemployment rate from March 2013 to March 2014 for the North Shore, Massachusetts, and the United States.

Figure 16



Top 15 Occupational Vacancies in Massachusetts¹⁶

The top fifteen occupational vacancies in Massachusetts are shown in Table 1. The reason for having Massachusetts occupational vacancies instead of the North Shore occupational vacancies is that no North Shore occupational vacancy data exists.

Table 1

Occupation	Job Vacancies	Median Wage	Job Vacancy Rate
Food Preparation and Serving Related Occupations	24,664	\$22,400	9.3
Sales and Related Occupations	17,967	\$28,080	5.7
Office and Administrative Support Occupations	13,091	\$37,340	3

¹⁵ Massachusetts Executive Office of Labor and Workforce Development, Job Vacancy Survey, 3rd Quarter 2013, www.mass.gov/lmi

¹⁶ Massachusetts Executive Office of Labor and Workforce Development, Job Vacancy Survey, 3rd Quarter 2013, www.mass.gov/lmi

Healthcare Practitioners and Technical Occupations	8,664	\$69,930	4.3
Computer and Mathematical Occupations	7,928	\$86,770	6.1
Transportation and Material Moving Occupations	7,139	\$31,840	4.9
Management Occupations	7,136	\$107,290	3.8
Building and Grounds Cleaning and Maintenance Occupations	7,086	\$30,090	8.2
Personal Care and Service Occupations	5,094	\$26,130	6.2
Business and Financial Operations Occupations	5,022	\$69,140	3

Job Vacancies in the North East of Massachusetts by Industry¹⁷

Table 2 shows job vacancies in the North East of Massachusetts. The North East consists of Essex County and the eastern half of Middlesex County. The North East region is used instead of the North Shore because data for North Shore does not exist.

Table 2

Industry	Job Vacancies	Job Vacancy Rate	Industry	Job Vacancies	Job Vacancy Rate
Totals All Industry	17,424	4.5	Real Estate and Rental and Leasing	328	8.8
Utilities	42	4.1	Professional and Technical Services	944	2.6
Construction	919	5.3	Management of Companies and Enterprises	215	3.7
Manufacturing	1,197	2	Administrative and Waste Services	1,370	6
Wholesale Trade	312	1.9	Educational Services	197	2.6
Retail Trade	2,587	5.1	Health Care and Social Assistance	3,115	4.5
Transportation and Warehousing	336	4.1	Arts, Entertainment, and Recreation	939	13.8
Information	253	2.2	Accommodation and Food Services	3,165	7.1
Finance and Insurance	436	4	Other Services, Ex. Public Admin	1,021	6.5

North Shore Population 2000 to 2010¹⁸⁻¹⁹

The estimated population on the North Shore in 2010 was 409,411. The North Shore accounts for 6.6% of Massachusetts population of 6,193,643. Table 3 shows the estimated population on the North Shore and for its city and towns in 2010 & 2000, the net population change from 2000 to 2010, and the percent population change from 2000 to 2010.

Table 3

Geographic Area	2010 Population	2000 Population	Net Change	Percent Change
North Shore	409,411	404,863	4,548	1.1%
Beverly	39,502	39,862	-360	-0.9%
Danvers	26,493	25,212	1,281	5.1%
Essex	3,504	3,267	237	7.3%
Gloucester	28,789	30,273	-1,484	-4.9%
Hamilton	7,764	8,315	-551	-6.6%
Ipswich	13,175	12,987	188	1.4%
Lynn	90,329	89,050	1,279	1.4%
Lynnfield	11,596	11,542	54	0.5%

¹⁷ Massachusetts Executive Office of Labor and Workforce Development, Job Vacancy Survey, 3rd Quarter 2013, www.mass.gov/lmi

¹⁸ U.S. Census Bureau, Census 2000, www.census.gov

¹⁹ U.S. Census Bureau, Census 2010, www.census.gov

Manchester	5,136	5,228	-92	-1.8%
Marblehead	19,808	20,377	-569	-2.8%
Middleton	8,987	7,744	1,243	16.1%
Nahant	3,410	3,632	-222	-6.1%
Peabody	51,251	48,129	3,122	6.5%
Rockport	6,952	7,767	-815	-10.5%
Salem	41,340	40,407	933	2.3%
Saugus	26,628	26,078	550	2.1%
Swampscott	13,787	14,412	-625	-4.3%
Topsfield	6,085	6,141	-56	-0.9%
Wenham	4,875	4,440	435	9.8%